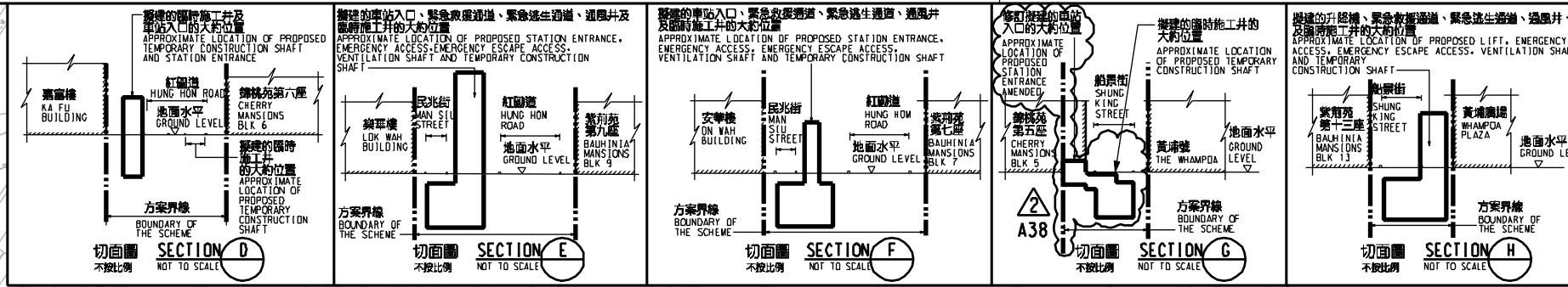
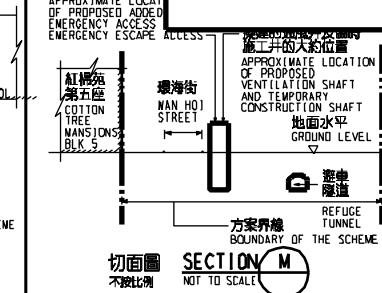
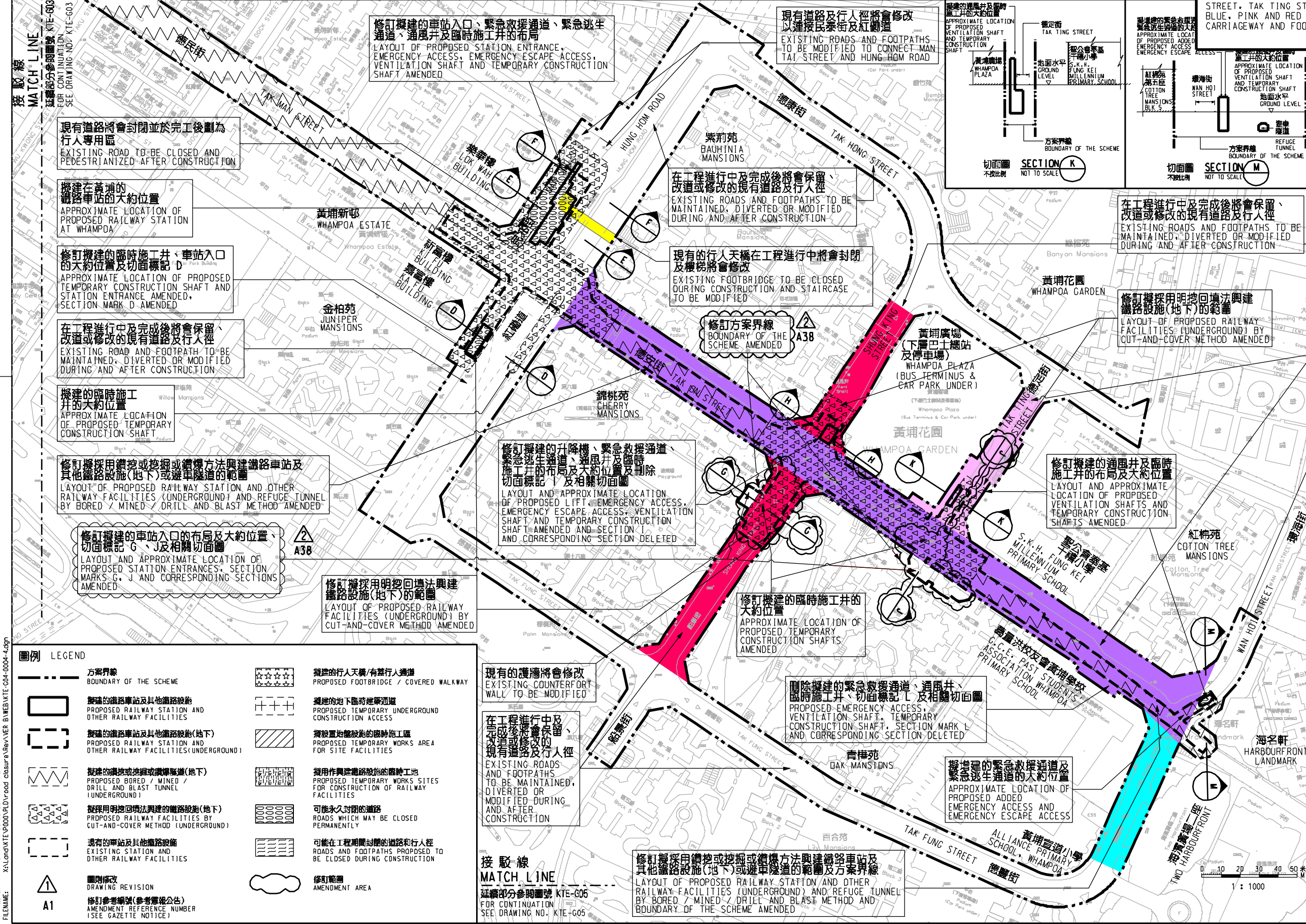


Plot No. 11818, 11819, 11820, 11821, 11822, 11823, 11824, 11825, 11826, 11827, 11828, 11829, 11830, 11831, 11832, 11833, 11834, 11835, 11836, 11837, 11838, 11839, 11840, 11841, 11842, 11843, 11844, 11845, 11846, 11847, 11848, 11849, 11850, 11851, 11852, 11853, 11854, 11855, 11856, 11857, 11858, 11859, 11860, 11861, 11862, 11863, 11864, 11865, 11866, 11867, 11868, 11869, 11870, 11871, 11872, 11873, 11874, 11875, 11876, 11877, 11878, 11879, 11880, 11881, 11882, 11883, 11884, 11885, 11886, 11887, 11888, 11889, 11890, 11891, 11892, 11893, 11894, 11895, 11896, 11897, 11898, 11899, 11900, 11901, 11902, 11903, 11904, 11905, 11906, 11907, 11908, 11909, 11910, 11911, 11912, 11913, 11914, 11915, 11916, 11917, 11918, 11919, 11920, 11921, 11922, 11923, 11924, 11925, 11926, 11927, 11928, 11929, 11930, 11931, 11932, 11933, 11934, 11935, 11936, 11937, 11938, 11939, 11940, 11941, 11942, 11943, 11944, 11945, 11946, 11947, 11948, 11949, 11950, 11951, 11952, 11953, 11954, 11955, 11956, 11957, 11958, 11959, 11960, 11961, 11962, 11963, 11964, 11965, 11966, 11967, 11968, 11969, 11970, 11971, 11972, 11973, 11974, 11975, 11976, 11977, 11978, 11979, 11980, 11981, 11982, 11983, 11984, 11985, 11986, 11987, 11988, 11989, 11990, 11991, 11992, 11993, 11994, 11995, 11996, 11997, 11998, 11999, 12000



說明 NOTES
 此圖根據第 KTE-G04 號 (修改 2) 圖則訂制, 以黃色標明將暫時封閉橫跨紅磡道並連接至黃埔花園紫荊苑的行人天橋, 以紫色標明將暫時封閉的德安街的部分行車道及行人路路面, 及分別以藍色、粉紅色和紅色標明將暫時封閉的德豐街、德定街和船景街的部分行車道及行人路路面的路面。
 THIS DRAWING IS PREPARED BASED ON DRAWING NO. KTE-G04 (REVISION 2) AND IS INTENDED TO SHOW THE FOOTBRIDGE ACROSS HUNG HOM ROAD CONNECTING TO BAUHINIA MANSIONS OF WHAMPOA GARDEN (HIGHLIGHTED IN YELLOW) TO BE TEMPORARILY CLOSED, TAK ON STREET (HIGHLIGHTED IN PURPLE) OF WHICH PARTS OF THE CARRIAGEWAY AND FOOTPATH WIDTHS ARE TO BE TEMPORARILY CLOSED, AND SECTIONS OF TAK FUNG STREET, TAK TING STREET AND SHUNG KING STREET (HIGHLIGHTED IN BLUE, PINK AND RED RESPECTIVELY) OF WHICH PARTS OF THE CARRIAGEWAY AND FOOTPATH WIDTHS ARE TO BE TEMPORARILY CLOSED.



一般說明 GENERAL NOTES
 1. 有關一般說明參閱圖號 KTE - G01.
 FOR GENERAL NOTES, REFER TO DRAWING NO. KTE - G01.

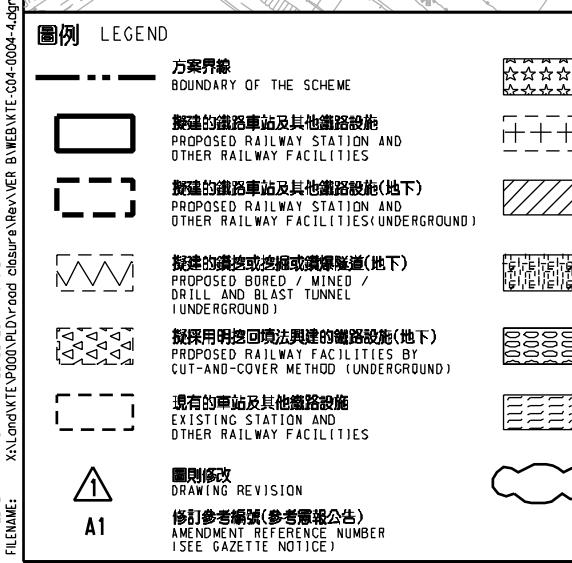
TABLE OF AMENDMENTS

Rev	Date	By	Sub	App	Description

SIGNED
 21/8/2014
 核准發出 APPROVED FOR ISSUE
 發出日期 DATE OF ISSUE

鐵路條例 (第519章)
觀塘線延伸線
 暫時封閉橫跨紅磡道並連接至黃埔花園紫荊苑的行人天橋; 以及德安街、德豐街、德定街和船景街路段
 RAILWAYS ORDINANCE (CHAPTER 519)
 KWUN TONG LINE EXTENSION
 TEMPORARY CLOSURE OF A FOOTBRIDGE ACROSS HUNG HOM ROAD CONNECTING TO BAUHINIA MANSIONS OF WHAMPOA GARDEN AND TAK ON STREET, SECTIONS OF TAK FUNG STREET, TAK TING STREET AND SHUNG KING STREET

圖號 DRAWING NO. KTE/G04/0004/4
 比例 SCALE 1:1000 (A1)
 或顯示 AS SHOWN
香港特別行政區政府
 THE GOVERNMENT OF THE HONG KONG
 SPECIAL ADMINISTRATIVE REGION
路政署
 HIGHWAYS DEPARTMENT
鐵路拓展處
 RAILWAY DEVELOPMENT OFFICE



PRINTED BY: ftkko
 FILENAME: X:\Lands\KTE\KTE-G04\KTE-G04-0004-4.dgn